

W&O POS Printer Setup

1. Star Printer Wifi/Lan, USB and BlueTooth	2
2. PC-Printer Adapter.....	4
3. PC-Printer Adapter with Epson TM-U220.....	8
4. ESC/POS Printer Wifi/Lan	12
5. ESC/POS Printer BlueTooth.....	15
6. ESC/POS Printer USB	17
7. Cash Drawer.....	19
8. How to Reserve IP Address	19
9. Problem & Solution.....	22

W&O POS supports four kinds of printer connection: 1. Star Printer Wifi/Lan, 2. PC-Printer Adapter, 3. ESC/POS Printer Wifi/Lan, 4. ESC/POS Printer USB. You can choose one of connection which is most suitable for your need. Here are their different and how to setup.

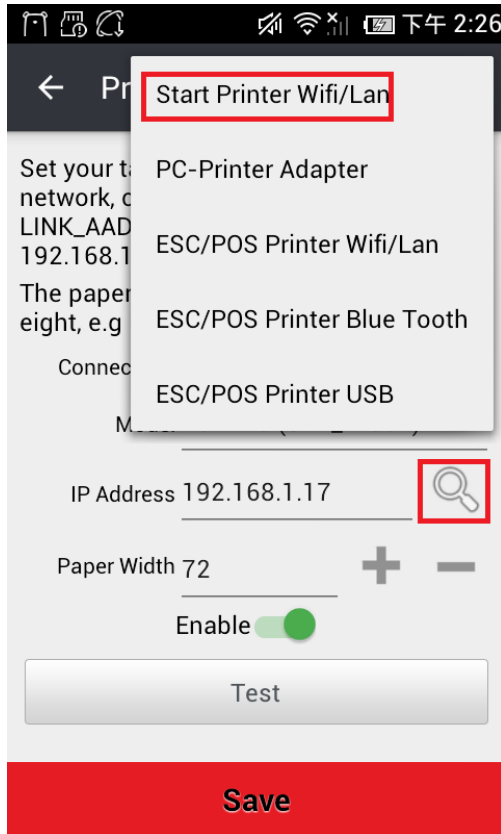
1. STAR PRINTER WIFI/LAN, USB AND BLUETOOTH

W&O POS supports Star Wifi/Lan, USB and Bluetooth thermal printers with model: TSP100, TSP650II, TSP650, TSP700II, TSP800II, SP700, SM-L200 and POP10(mPOP). Here is the guide how to setup Star Wifi/Lan printer. For the setting Star Printer USB, Bluetooth, you can reference to Chapters “ESC/POS PRINTER USB” and “ESC/POS PRINTER BLUETOOTH”

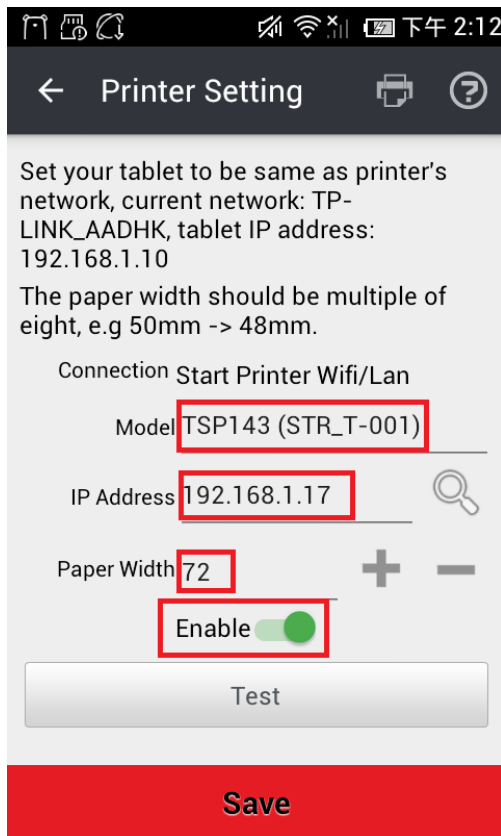
How to setup Star Wifi/Lan Printer connect with W&O POS app.



1. Turn on Star Printer.
2. In WnO POS printer setting, choose printer connection “Star Printer Wifi/Lan”. And click search icon to find printer.



3. Choose printer from the list, setup paper width, and enable the printer.



2. PC-PRINTER ADAPTER

W&O POS printer adapter is the most stable and supports all kind of printers. The adapter is installed in windows computer. W&O POS app connect printer through the adapter. The local server version includes PC-Printer adapter, don't need to install and run PC-Printer Adapter.



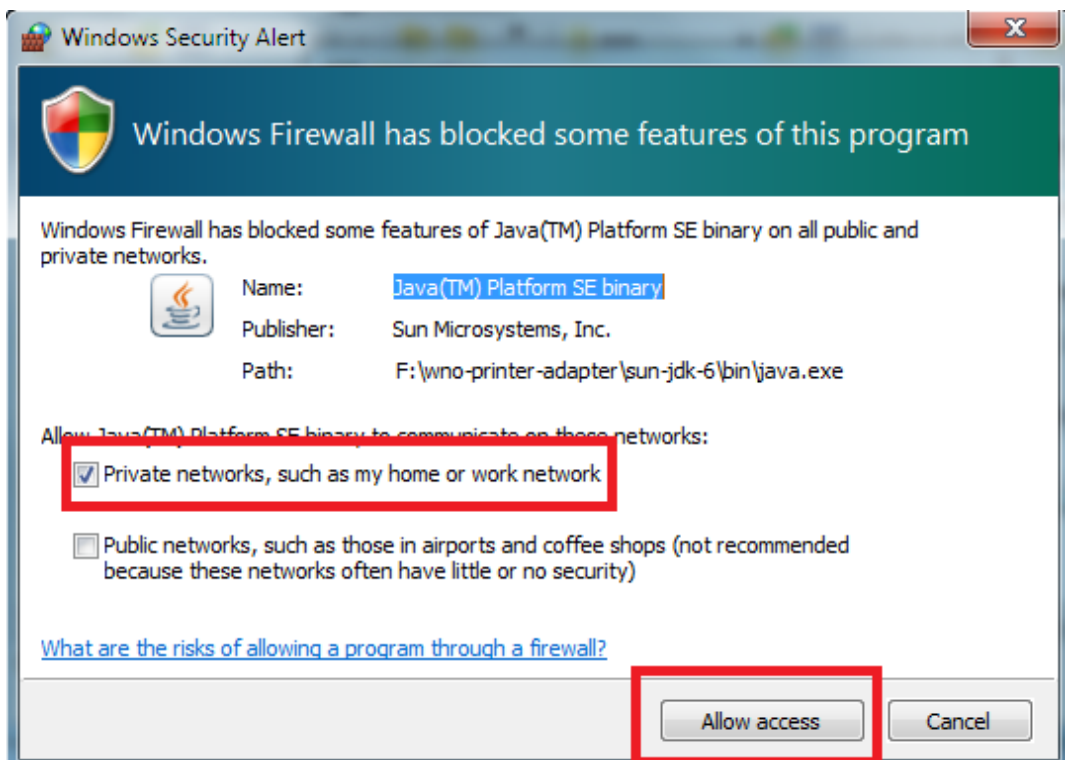
1. Download the zip file from
<https://drive.google.com/#folders/0BxPQIRLGhJmvc1dXXzhQbnA1STQ>
2. Unzip “wno-printer-adapter.zip” to c:\ wno-printer-adapter
3. Before run the WnOPOS printer adapter, install the printer driver in windows.



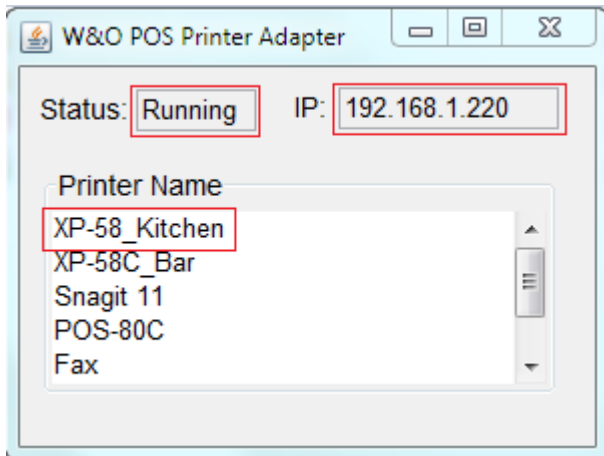
4. Double click “wno-printer-adapter.exe”

Name	Date modified	Type	Size
apache-tomcat-7.0.54	13/6/2014 16:54	File folder	
sun-jdk-6	13/6/2014 16:54	File folder	
Setup_Guide.pdf	13/6/2014 17:23	Adobe Acrobat D...	317 KB
wno-printer-adapter.exe	21/6/2014 17:37	Application	55 KB

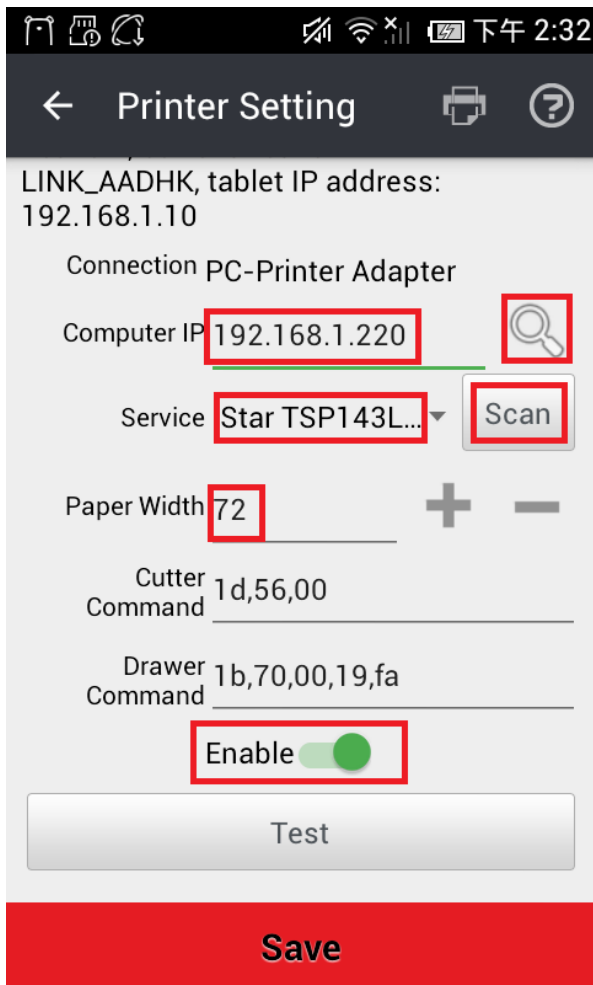
5. Allow firewall for WnOPOS printer adapter port 8080(Allow private network). This step is very important, if you don't see the popup screen, it is better to restart the adapter again.



6. Show WnOPOS printer adapter console, make sure the status is running. The IP address and printer name will be used at printer setting in the WnOPOS App. If the status is not running, restart the adapter again.

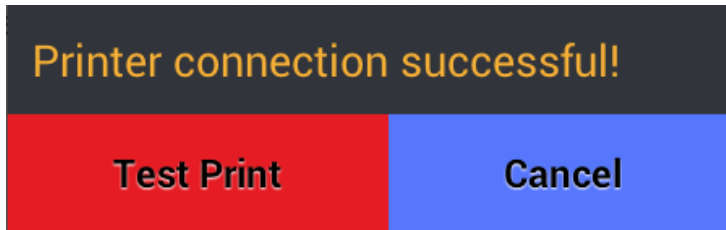


7. In the WnOPOS printer setting, choose "PC-POS Printer Adapter" and click search to find hosting computer IP, then click scan. Choose the printer service from the list.



8. After choose printer service, enable the printer, then you can test connection.

9. When printer connection is successful, you can test print.

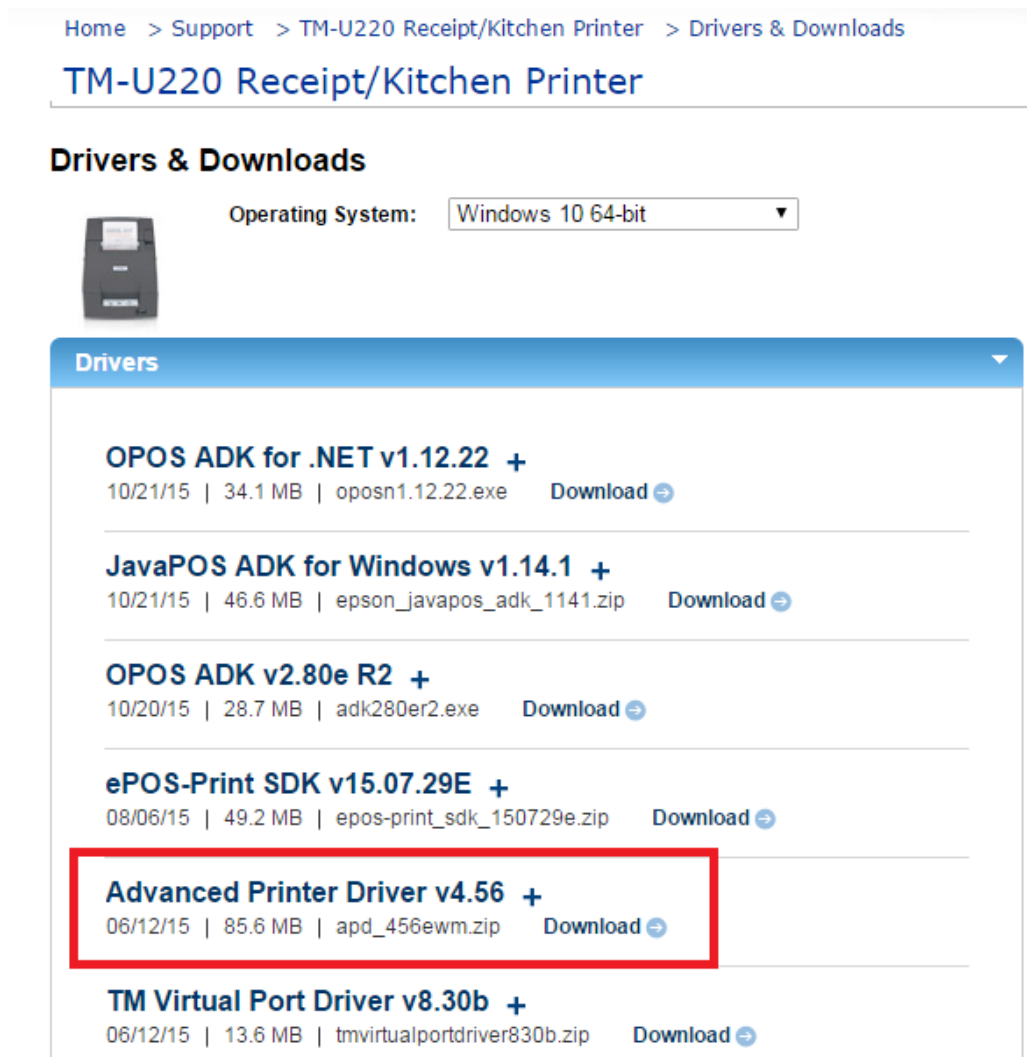


If you follow the above steps still having problem, please email me. Make sure the printer driver is installed and print correctly from driver.

3. PC-PRINTER ADAPTER WITH EPSON TM-U220

Here is sample of setup PC-Printer Adapter with Epson TM-U220. You can download Epson Advanced Printer Driver and EpsonNet Config Utility from the link http://www.epson.com/cgi-bin/Store/support/supDetail.jsp?oid=279157&infoType=Downloads&platform=OSF_W_8-32

1. Download and install Epson Advanced Printer Driver.



Home > Support > TM-U220 Receipt/Kitchen Printer > Drivers & Downloads

TM-U220 Receipt/Kitchen Printer

Drivers & Downloads

Operating System:

Drivers

- OPOS ADK for .NET v1.12.22 +**
10/21/15 | 34.1 MB | oposn1.12.22.exe [Download](#)
- JavaPOS ADK for Windows v1.14.1 +**
10/21/15 | 46.6 MB | eposn_javapos_adk_1141.zip [Download](#)
- OPOS ADK v2.80e R2 +**
10/20/15 | 28.7 MB | adk280er2.exe [Download](#)
- ePOS-Print SDK v15.07.29E +**
08/06/15 | 49.2 MB | epos-print_sdk_150729e.zip [Download](#)
- Advanced Printer Driver v4.56 +**
06/12/15 | 85.6 MB | apd_456ewm.zip [Download](#)
- TM Virtual Port Driver v8.30b +**
06/12/15 | 13.6 MB | tmvirtualportdriver830b.zip [Download](#)

2. If the printer IP is different from your network, you need to change printer IP. Download and install EpsonNet Config Utility.

Drivers & Downloads



Operating System: Windows 8 32-bit

Drivers

Utilities

TM Automatic Restore Utility v3.4 +

06/11/15 | 13.5 MB | tautomaticrestoreutility340.zip [Download](#)

EpsonNet Config Utility for Windows v4.5.3 +

06/11/15 | 17.2 MB | epsonnetconfig_v453.exe [Download](#)

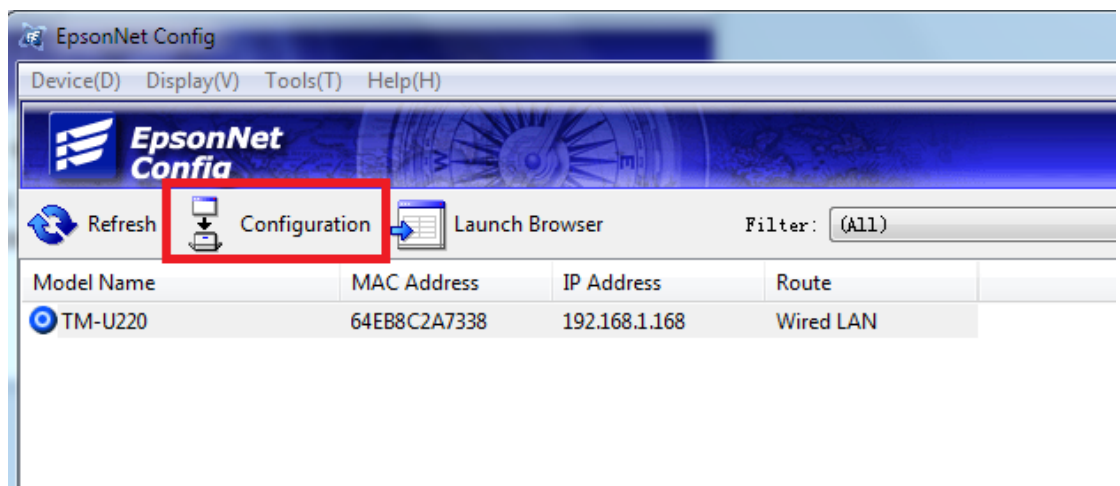
Monitoring Tool v1.58.00 +

05/29/15 | 5.2 MB | tmfntrun_15800e.zip [Download](#)

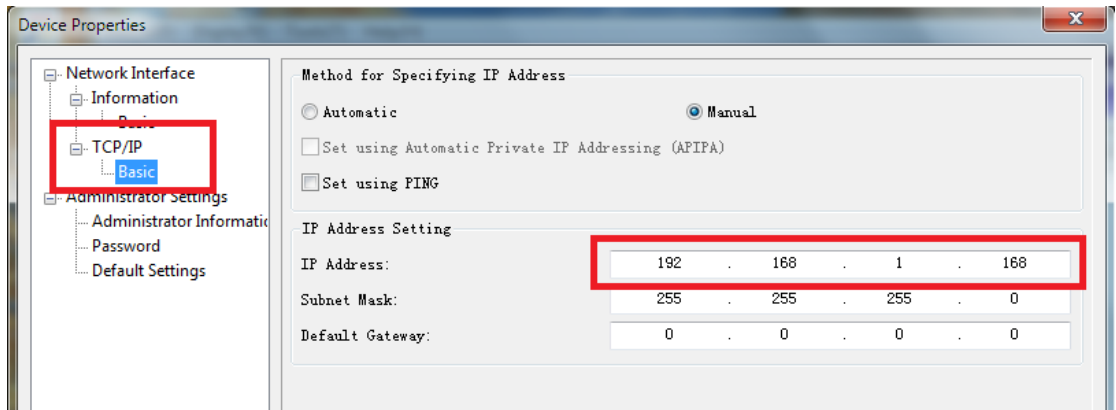
Deployment Tool v5.0 +

05/29/15 | 458.6 KB | tmusbdiv500e.exe [Download](#)

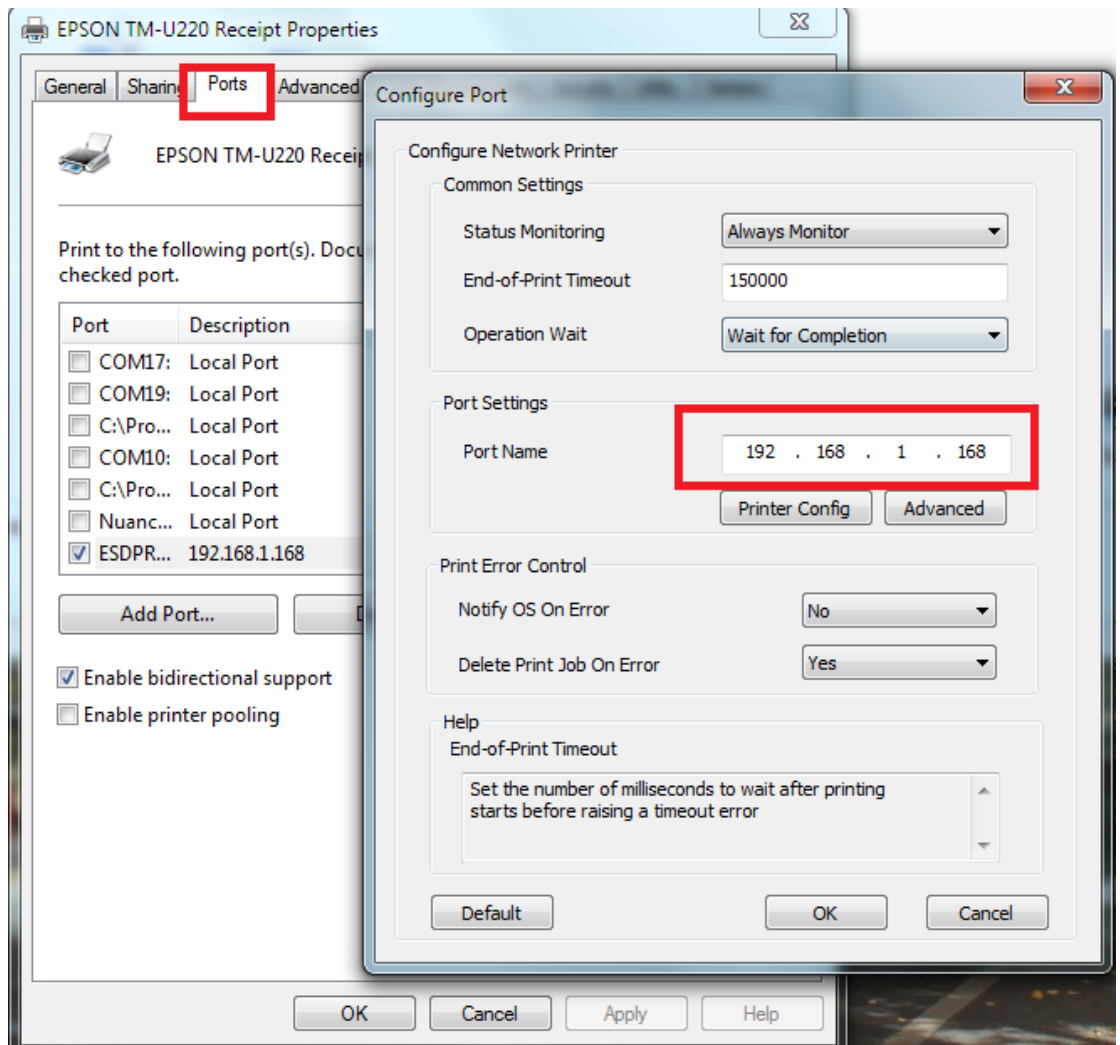
3. Run EpsonNet Config Utility, select the printer and click Configuration



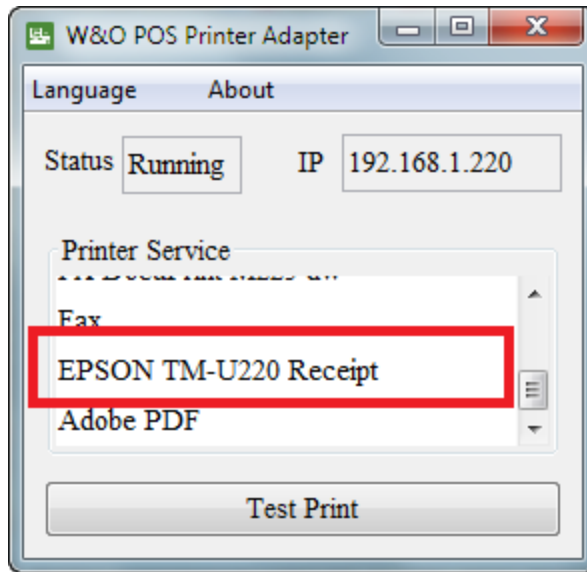
4. Select the TCP/IP, input your new Printer IP and Transmit



5. After change Printer IP, you need to change Printer Driver IP.



6. You can see the Epson TM-U 220 in the PC-Printer Adapter or in the tablet app.

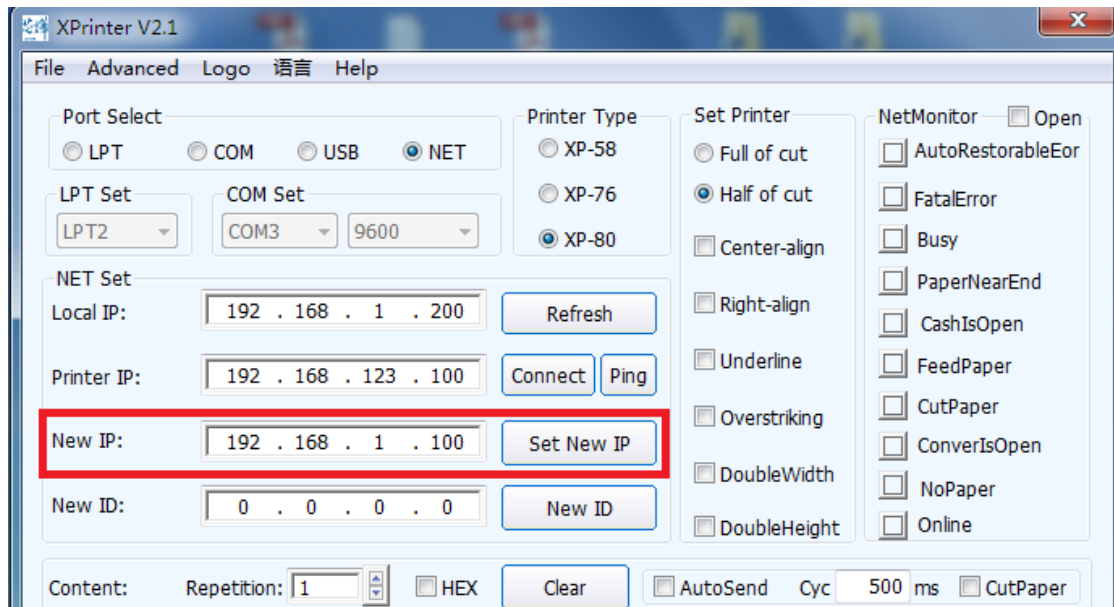


4. ESC/POS PRINTER WIFI/LAN

Wifi connection supports most thermal printers with WIFI/LAN and ESC/POS Command.



1. Setup thermal printer IP by printer manufactory software.

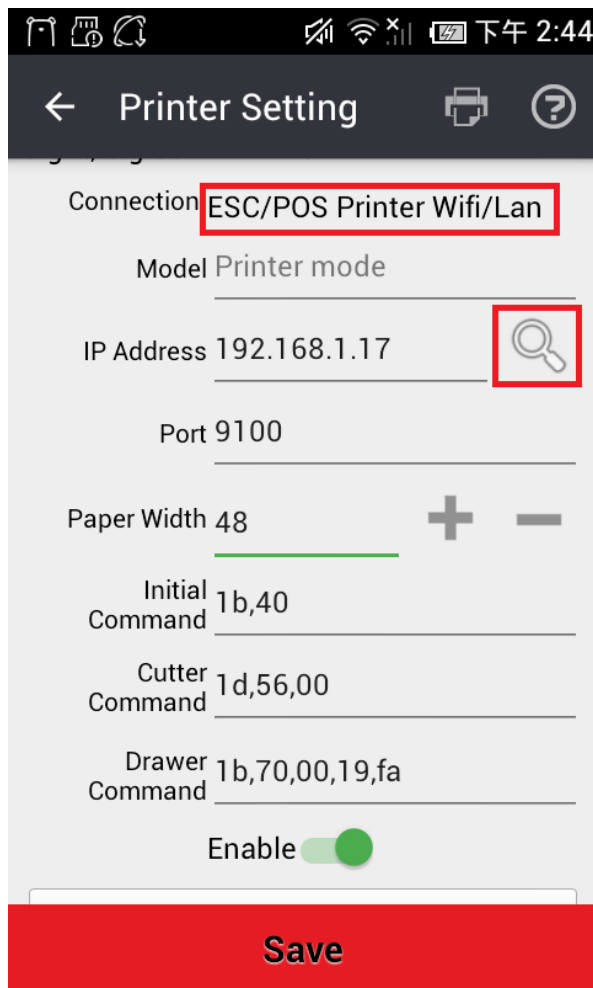


2. Verify printer IP by print out self –test(switch on printer with holding the “FEED” button)

Selftest

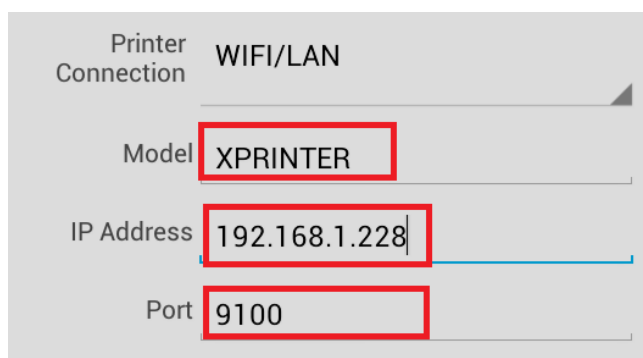
```
Version : 3.2F
Speed : 90mm/s
Interface : Ethernet(100M)
Protocols : TCP/IP
EthernetID: 00-DC-7E-67-6D-58
IP address: 192.168.1.228
Netmask : 255.255.255.0
NetGateway: 192.168.1.1
Avoid lost Doc : Off
Default code page: Page0
Print Density : Light
Chinese character: Yes
Image NV Download: Yes
Modify date : 2012/06/15
```

3. In WnO POS printer setting, choose printer connection “ESC/POS Printer Wifi/Lan”. Click search to find printer IP.




4. Choose printer IP from list or manually input IP. Make sure the tablet and printer are in same network.

The printer default port is 9100.

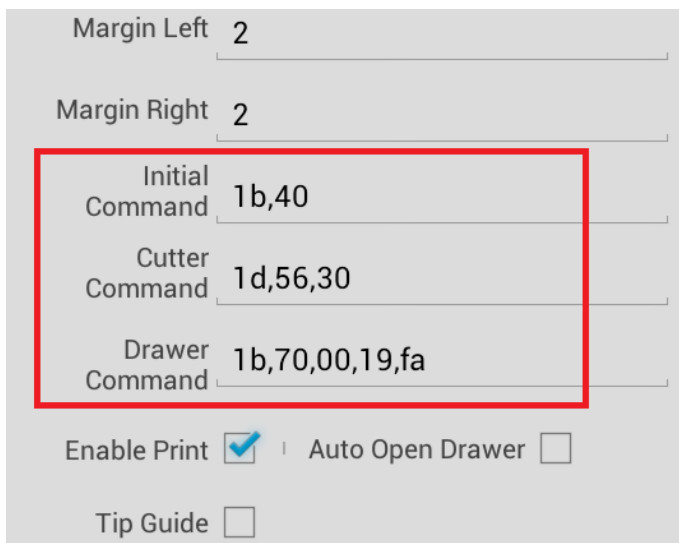


5. Make sure the paper width setting correctly; otherwise it will print out garbage content. If printer is 50mm, set paper width to 48mm. If printer is 80mm, set paper width to 72mm. If it not working, reference to your printer manual. The paper width should be multiple of eight.



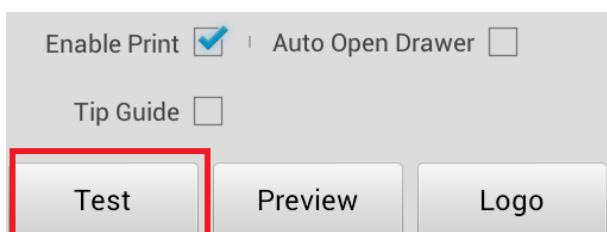
Copies 1
Paper Width 48
Margin Top 4

6. Also make sure the commands are correct.

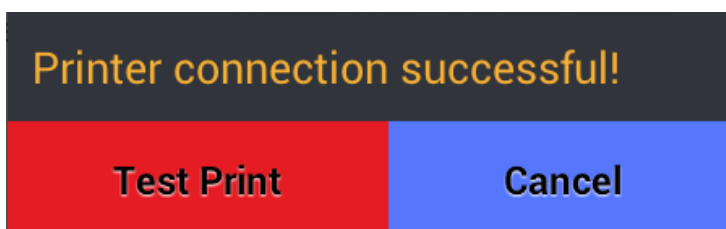


Margin Left 2
Margin Right 2
Initial Command 1b,40
Cutter Command 1d,56,30
Drawer Command 1b,70,00,19,fa
Enable Print | Auto Open Drawer
Tip Guide

7. Test printer connection, and test print.



Enable Print | Auto Open Drawer
Tip Guide
Test Preview Logo

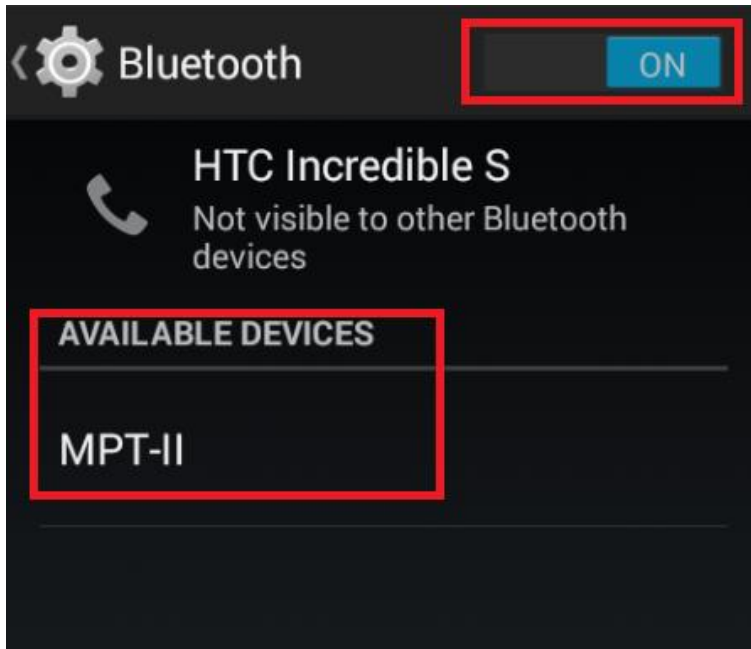


Printer connection successful!
Test Print Cancel

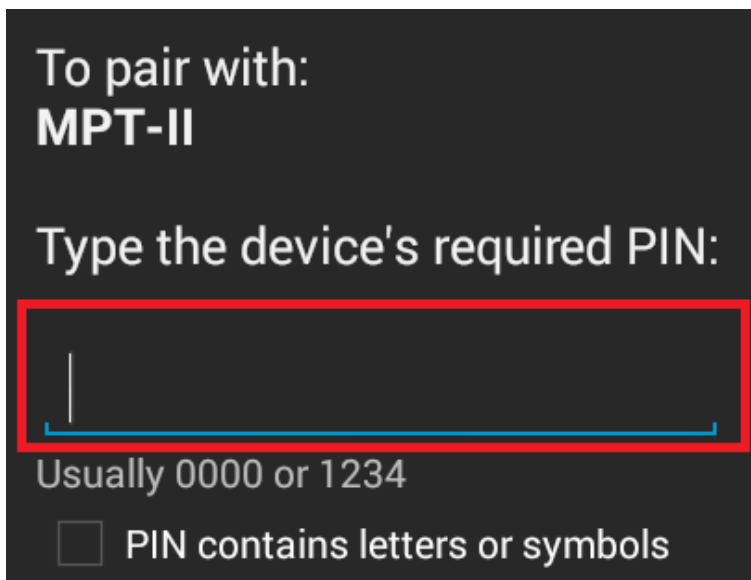
5. ESC/POS PRINTER BLUETOOTH

Bluetooth connection supports most thermal printers with ESC/POS Command.

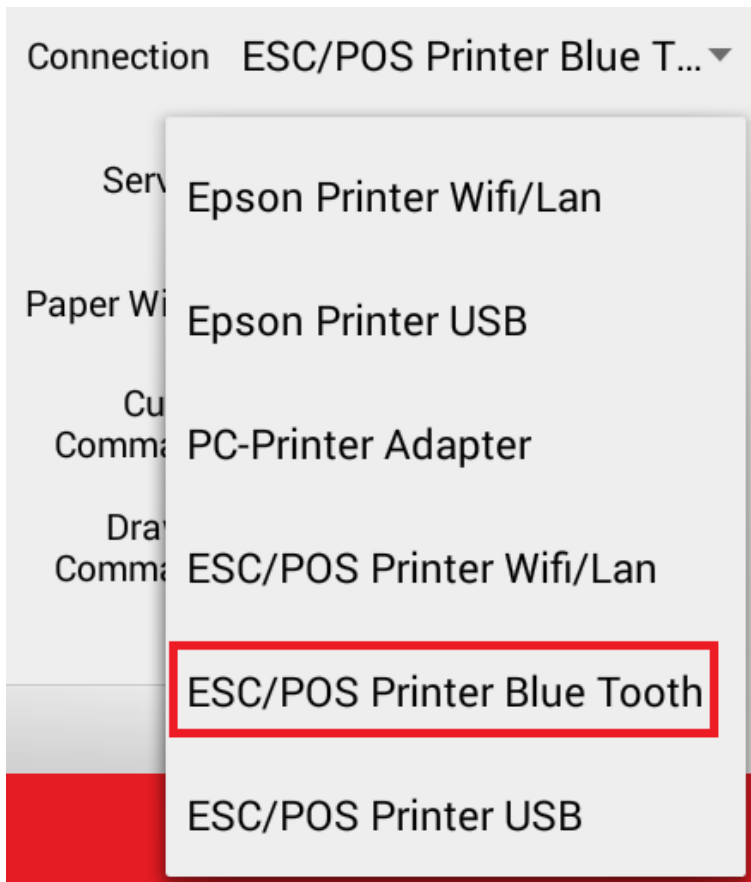
1. Ensure Bluetooth is enabled and the Bluetooth printer is on.



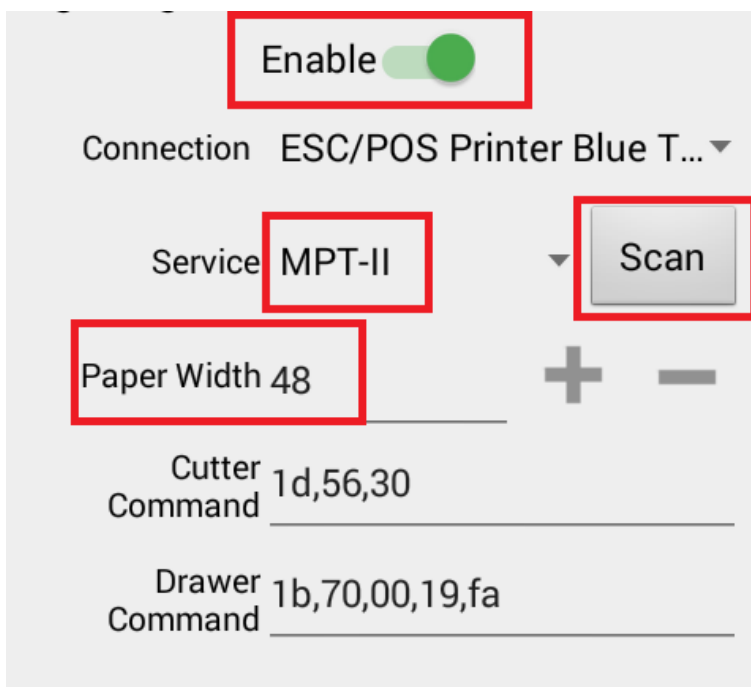
2. Search available devices, and then tap it to pair. Enter the PIN number.



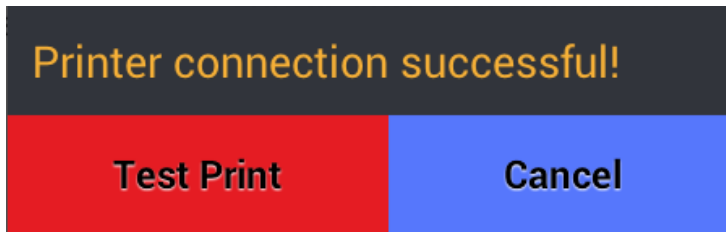
3. In the app, choose ESC/POS Printer Bluetooth.



4. Tap “Scan” and choose the paired printer. Make sure paper width is correct and is in enable status.



5. Test printer connection, and test print.

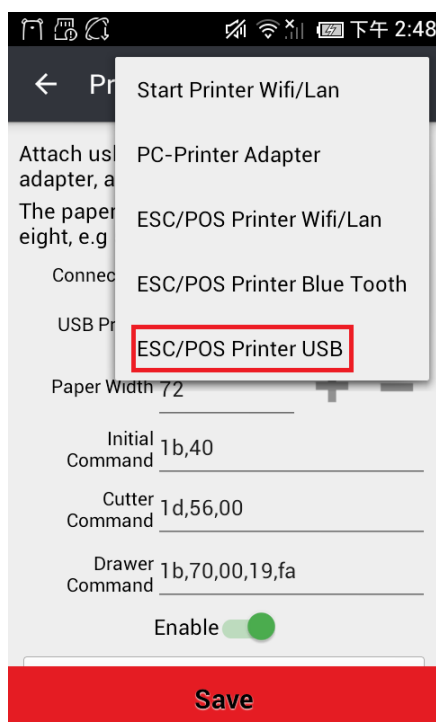


6. ESC/POS PRINTER USB

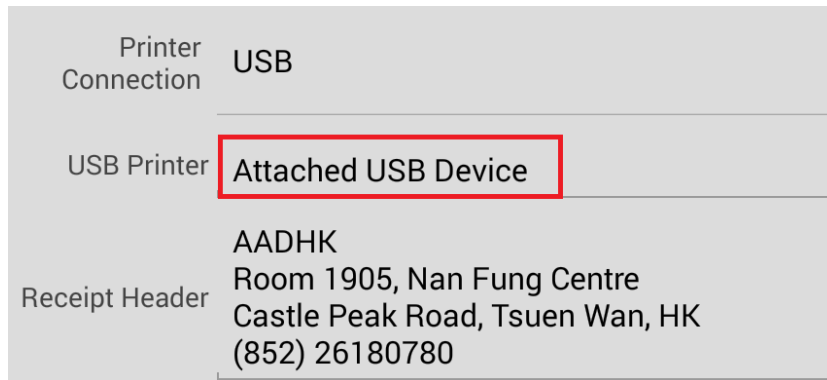
USB connection requires device with Android 3.1 or higher. And make sure your device support USB host.



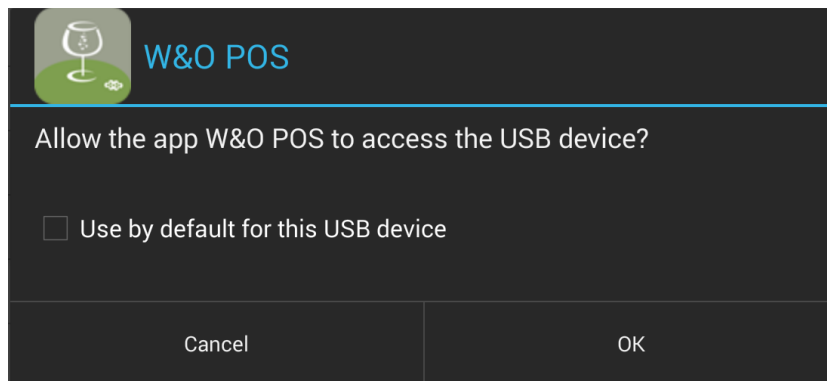
1. In the WnOPOS printer setting, choose "USB".



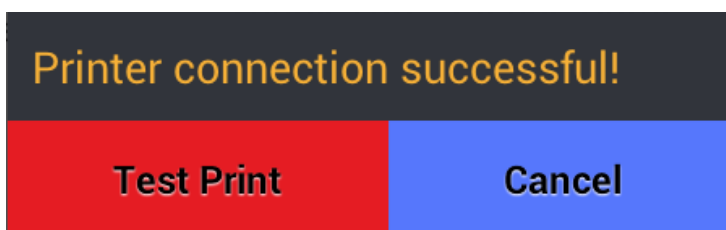
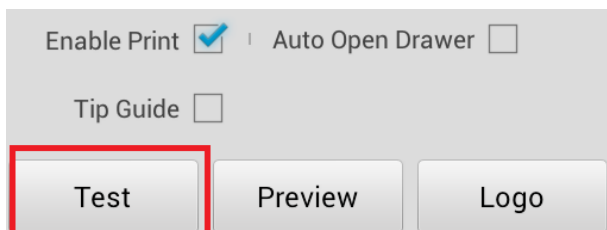
- Attached usb printer by Micro USB to USB adapter, the app will automatically detect the attached device.



- Click ok to allow WnOPOs to access the usb device.



- Test printer connection, and test print.



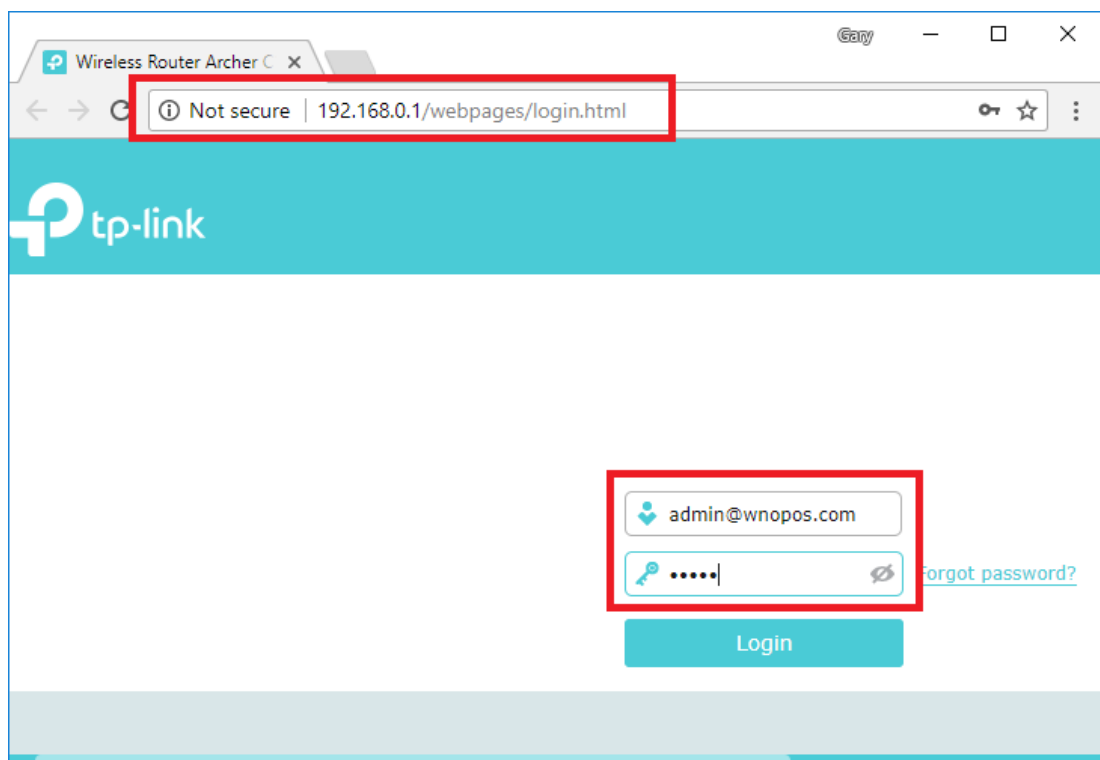
7. CASH DRAWER

The cash drawer is connected to printer. W&O POS send command to cash drawer through printer. The default cash drawer command is “1b,70,00,19,fa”, if not work, reference your cash drawer user manual.

8. HOW TO RESERVE IP ADDRESS

Sometimes, your router may assign different IP to Wifi/Lan printer or windows PC with W&O POS Adapter when you restart router, printer or computer. In that case, you need to assign local static IP to LAN/Wifi Printer or Windows PC. Here is sample of how to assign static IP in TP-Link.

1. Open your browser and input your IP Address <http://192.168.0.1> to access Router Admin Portal. Then input user and password to login.



2. Go to Advanced > DHCP Server > Address Reservation, click add

The screenshot shows the TP-Link web interface. The 'Advanced' tab is selected. The 'Address Reservation' section is highlighted with a red box. Below it, a table shows existing reservations, and a 'DHCP Client List' table is visible.

ID	MAC Address	Reserved IP Address	Description	Status	Modify
1	30-85-A9-3C-73-5C	192.168.0.100	room computer	Lightbulb icon	Edit/Delete icons

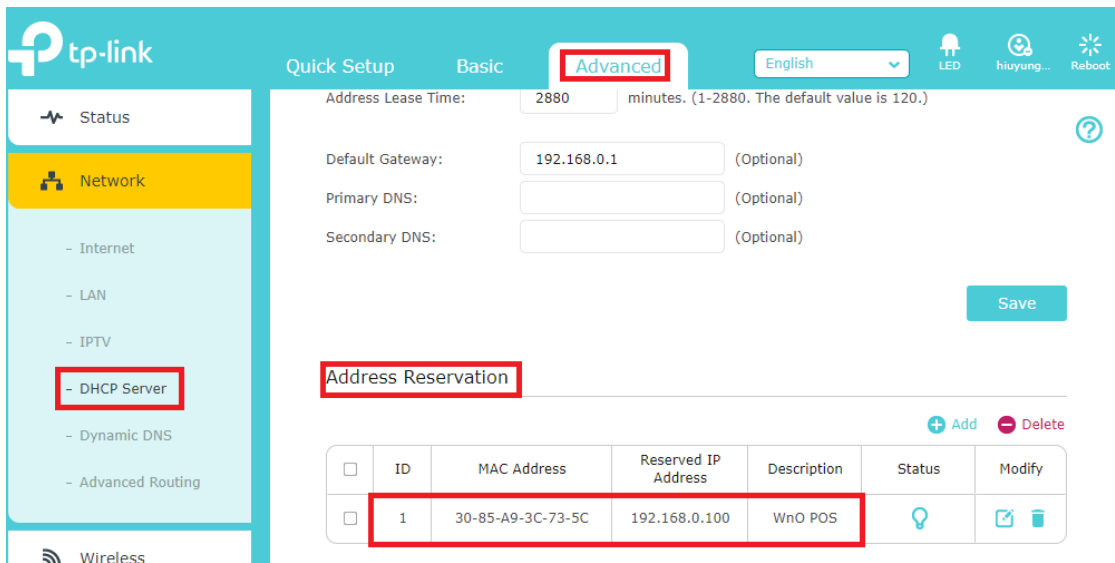
ID	Client Name	MAC Address	Assigned IP Address	Lease Time
1	SKY-20160326VXY	30-85-A9-3C-73-5C	192.168.0.100	Permanent
2	android-769262b76dd2429f	40-F3-08-4B-8D-51	192.168.0.173	43:43:25
3	android-8b0e3aff33444e2c	AC-36-13-D6-DA-A9	192.168.0.133	45:9:18
4	android-1613b73047f35b3a	0C-56-5C-21-06-E6	192.168.0.110	44:19:41

3. On the Address Reservation tab, input Mac Address, IP Address and Description from the DHCP Client List. After input those information, click save.

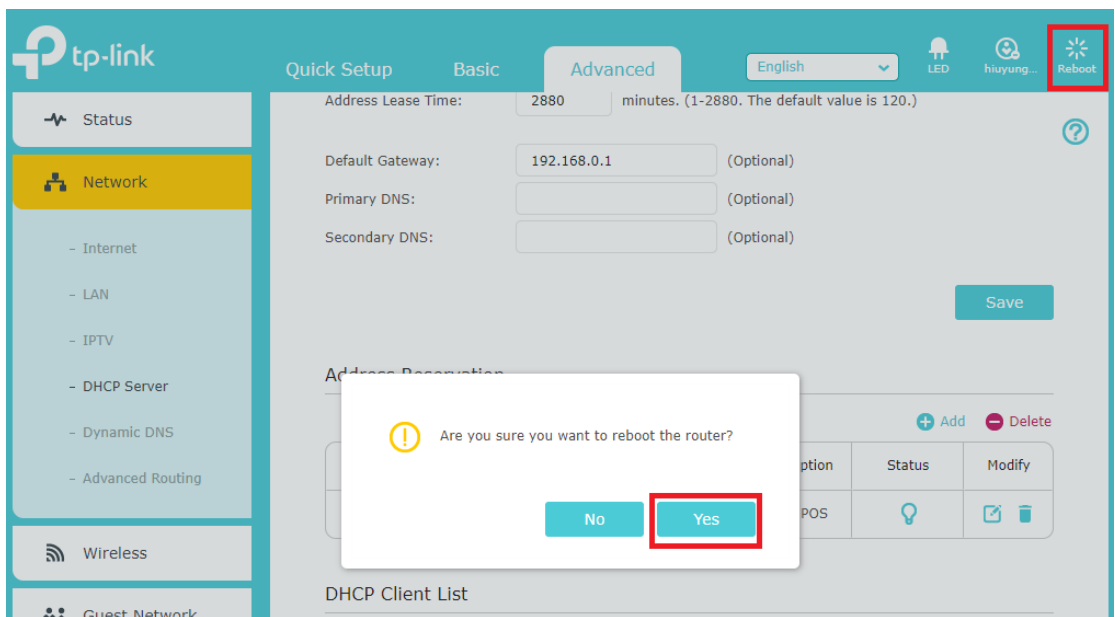
The screenshot shows the TP-Link web interface. The 'Address Reservation' section is highlighted with a red box. Below it, a form is shown with fields for MAC Address, IP Address, and Description, all highlighted with red boxes. A 'DHCP Client List' table is also visible.

ID	Client Name	MAC Address	Assigned IP Address	Lease Time
1	SKY-20160326VXY	30-85-A9-3C-73-5C	192.168.0.100	Permanent
2	android-769262b76dd2429f	40-F3-08-4B-8D-51	192.168.0.173	43:43:25
3	android-8b0e3aff33444e2c	AC-36-13-D6-DA-A9	192.168.0.133	45:9:18
4	android-1613b73047f35b3a	0C-56-5C-21-06-E6	192.168.0.110	44:19:41

4. You will see the IP Address of Windows PC is reserved on the list.



5. You can reboot the router to activate the setting immediately.



9. PROBLEM & SOLUTION

1. How to find printer IP if you using Wifi/Lan connection?

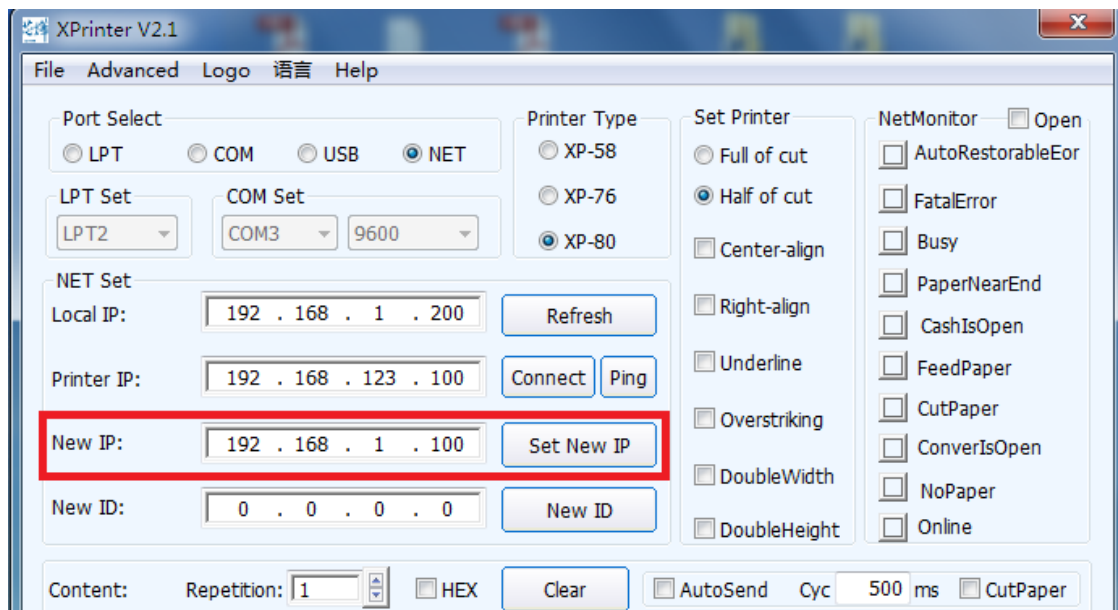
Verify printer IP by print out self –test (switch on printer with holding the “FEED” button)

Selftest

```
Version : 3.2F
Speed : 90mm/s
Interface : Ethernet(100M)
Protocols : TCP/IP
EthernetID: 00-DC-7E-67-6D-58
IP address: 192.168.1.228
Netmask : 255.255.255.0
NetGateway: 192.168.1.1
Avoid lost Doc : Off
Default code page: Page0
Print Density : Light
Chinese character: Yes
Image NV Download: Yes
Modify date : 2012/06/15
```

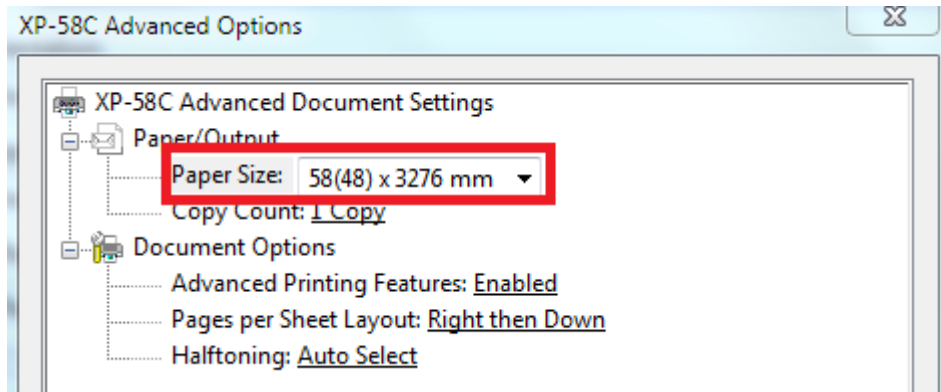
2. How to change printer IP if you using wifi/lan connection?

Setup printer IP by printer manufactory software.



3. Sometimes, your router may assign different IP to Wifi/Lan printer or W&O POS Adapter when you restart router, printer or computer. In that case, you need to assign local static IP to LAN/Wifi Printer or W&O POS Adapter. Here is sample of how to assign static IP in D-Link.

4. When you are using W&O POS printer adapter, it cannot print long bill and only print out part of it. Check your printer driver setting; and make sure the paper size is correct.



End